



# GMT MONTHLY MEMBERSHIP PROGRESS REPORT

Results as of: 12/31/2019

Multiple District 8

LOCATION: LOUISIANA

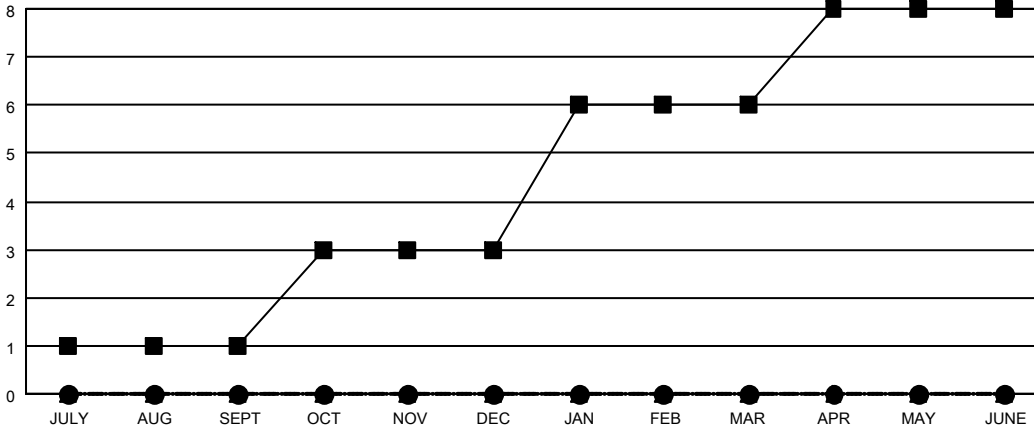
GMT: OPEN

GMT CA 1

| Clubs                 |               |           |               |
|-----------------------|---------------|-----------|---------------|
| RESULTS FOR 2019-2020 |               |           |               |
| QUARTER               | NEW CLUB GOAL | NEW CLUBS | DROPPED CLUBS |
| JULY/AUG/SEPT         | 1             | 0         | 0             |
| OCT/NOV/DEC           | 2             | 0         | 2             |
| JAN/FEB/MAR           | 3             | 0         | 0             |
| APR/MAY/JUNE          | 2             | 0         | 0             |

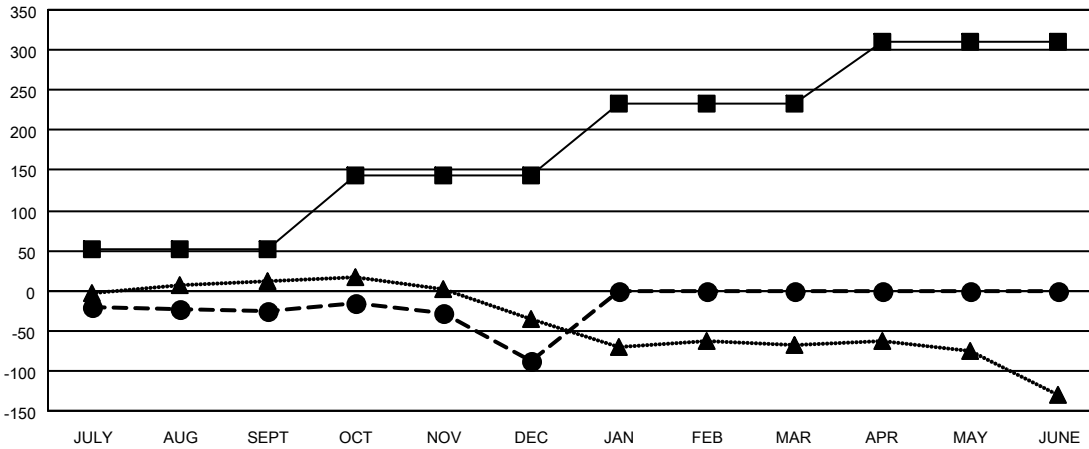
| Members               |                        |                      |  |
|-----------------------|------------------------|----------------------|--|
| RESULTS FOR 2019-2020 |                        |                      |  |
| QUARTER               | MEMBER GROWTH NET GOAL | MEMBER GROWTH ACTUAL | DROPPED MEMBERS ACTUAL (including transfers) |
| JULY/AUG/SEPT         | 51                     | 79                   | 97   |
| OCT/NOV/DEC           | 92                     | 70                   | 128  |
| JAN/FEB/MAR           | 91                     | 0                    | 0  |
| APR/MAY/JUNE          | 76                     | 0                    | 0  |

GOALS AND ACTUAL NEW CLUBS CUMULATIVE



- - CURRENT YEAR GOALS FOR NEW CLUBS
- - CURRENT YEAR ACTUAL NEW CLUBS
- ▲ - LAST YEAR ACTUAL NEW CLUBS

GOALS AND ACTUAL MEMBERS CUMULATIVE



- - MEMBER GROWTH NET GOAL
- - MEMBER GROWTH ACTUAL
- ▲ - LAST YEAR MEMBERSHIP ACTUAL

|                        |   |                                     |
|------------------------|---|-------------------------------------|
| DROPPED CLUBS: 2       | 52 CLUBS OF 144 ADDED 1 OR MORE NEW MEMBERS               | <u>GENDER DISTRIBUTION</u>          |
|                        |   | MALE 2,645 (67.96%)                 |
|                        |   | FEMALE 1,247 (32.04%)               |
| <u>DROPPED MEMBERS</u> | <a href="#">CLICK HERE FOR CUMULATIVE MEMBERSHIP DATA</a> | TOTAL FAMILY UNIT MEMBERS 678       |
| DECEASED 18            |   | FAMILY MEMBERS PAYING HALF DUES 353 |
| CLUB CANCELLED 18      |   |                                     |
| OTHER 189              |   |                                     |
| TOTAL 225              |   |                                     |